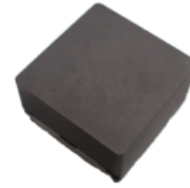


XRK1770B

New Products

RoHS

AEC-Q200



■ Features

- Magnetic shield type inductor using a metallic magnetic material.
- Closed magnetic circuit structure with low leakage flux
- Low inductance variance in high-temperature environments with good DC saturation characteristics.
- Decreased acoustic noise by there are no air gaps.

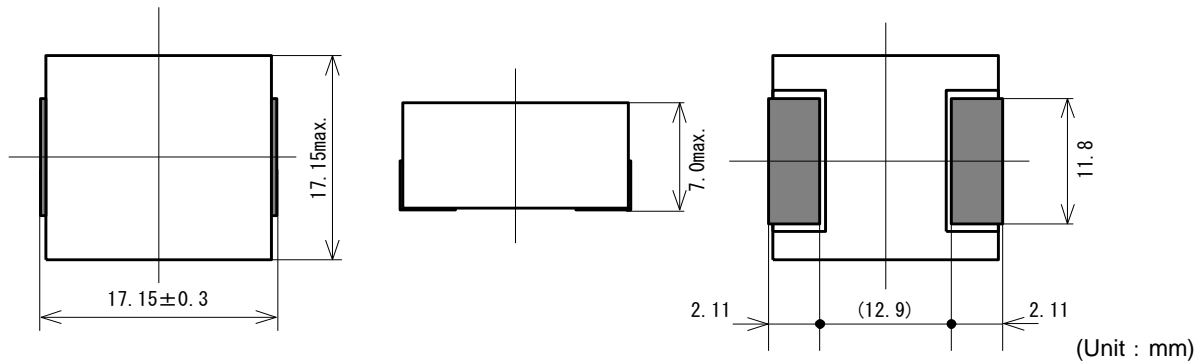
Operating Temperature Range : -40 °C~ +150 °C(include self-heating)

Weight : 10.0 g

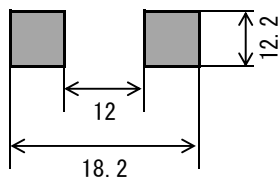
■ Application

- Note PCs
- HDDs
- Servers
- VRMs
- Compact power supply modules
- Others

■ Dimensions



■ Recommended Land Pattern



SAGAMI ELEC CO., LTD.
<https://www.sagami-elec.co.jp>

10-30, Ichibashimo-cho, Tsurumi-ku, Yokohama, Kanagawa 230-0024, Japan
Over Seas Sales Dept. TEL : +81 45 511 3141, E-mail : ossg@sagami-elec.co.jp
Engineering Dept. TEL : +81 45 521 4543

⚠ The contents of this catalogue are subject to change without notice.

■ Specifications

SAGAMI Part No.	Inductance (μH)	DCR Resistance		DC saturation allowable current (A)	Teperature rise allowable current (A)
		(m Ω)			
		Typical	max.		
XRK1770B-R68M	0.68 $\pm 20\%$	1.15	1.30	57.0	27.0
XRK1770B-1R0M	1 $\pm 20\%$	1.24	1.46	42.0	28.0
XRK1770B-1R5M	1.5 $\pm 20\%$	1.94	2.24	31.0	23.0
XRK1770B-2R2M	2.2 $\pm 20\%$	2.25	2.41	26.0	22.0
XRK1770B-3R3M	3.3 $\pm 20\%$	3.00	3.27	25.0	19.5
XRK1770B-4R7M	4.7 $\pm 20\%$	4.10	4.72	22.0	17.0
XRK1770B-6R8M	6.8 $\pm 20\%$	6.22	7.16	14.5	13.7
XRK1770B-8R2M	8.2 $\pm 20\%$	7.96	8.70	15.0	12.5
XRK1770B-100M	10 $\pm 20\%$	8.94	10.0	13.5	11.0
XRK1770B-150M	15 $\pm 20\%$	12.6	15.5	12.0	9.40
XRK1770B-220M	22 $\pm 20\%$	21.0	22.2	9.20	7.30
XRK1770B-330M	33 $\pm 20\%$	34.8	37.0	7.70	6.20
XRK1770B-470M	47 $\pm 20\%$	39.9	46.0	6.80	5.30
XRK1770B-680M	68 $\pm 20\%$	55.5	60.0	5.40	4.40

- Inductance Measuring Condition : 100kHz,1V
- Rated current : DC saturation allowable current or Temperature rise allowable current, whichever is smaller.
 1. DC saturation allowable current : value of inductance decrease 20%.
 2. Temperature rise allowable current : A rise in temperature of core surface is 30°C.



SAGAMI ELEC CO., LTD.
<https://www.sagami-elec.co.jp>

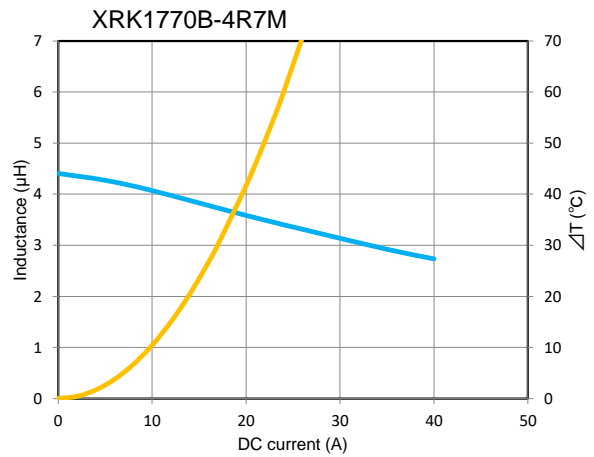
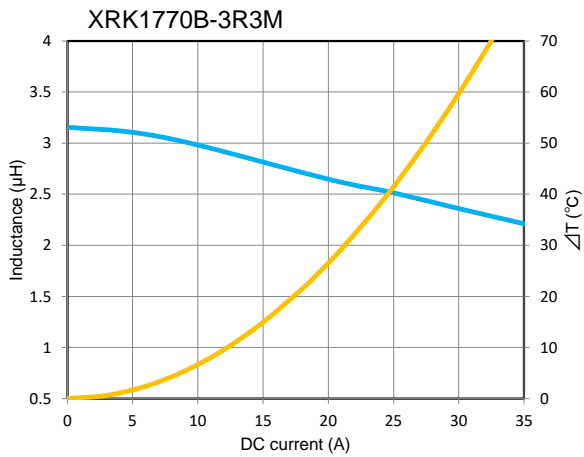
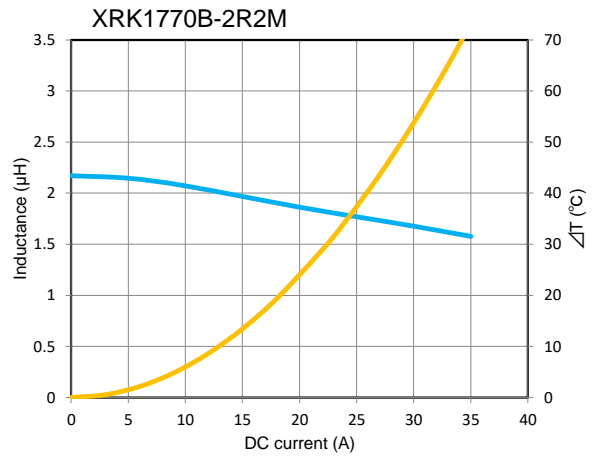
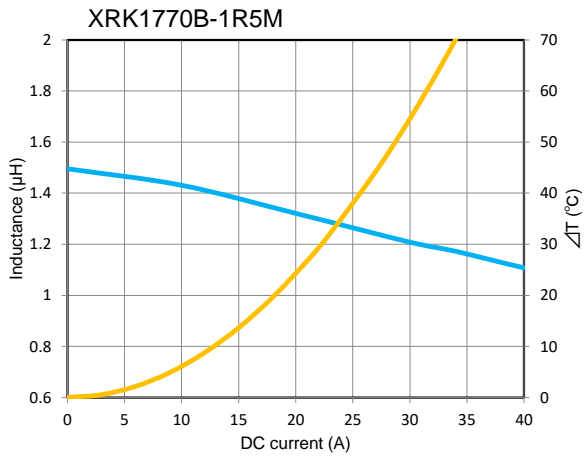
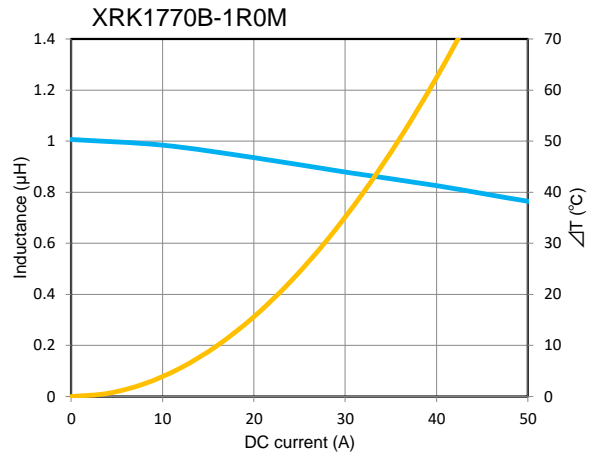
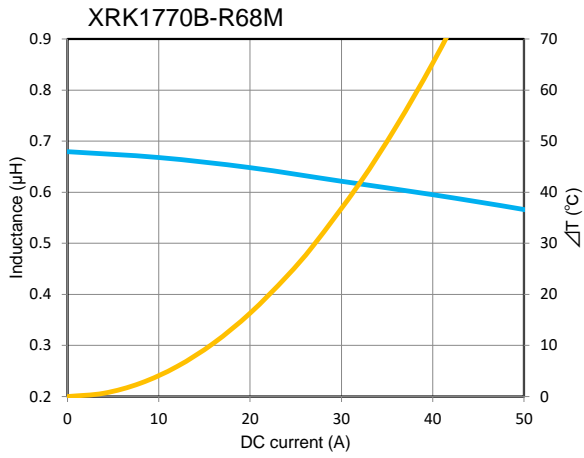
10-30, Ichibashimo-cho, Tsurumi-ku, Yokohama, Kanagawa 230-0024, Japan
 Over Seas Sales Dept. TEL : +81 45 511 3141, E-mail : ossg@sagami-elec.co.jp
 Engineering Dept. TEL : +81 45 521 4543

△ The contents of this catalogue are subject to change without notice.

DC bias characteristics vs Temperature Rise Graph

 L(25°C)

 ΔT



DC bias characteristics vs Temperature Rise Graph

■ L(25°C) ■ ΔT

