

VER1480B

New Products

RoHS

AEC-Q200



■ Features

- For various power supplies
- Optimal transformer design according to required specifications is possible
- Compatible with multiple outputs
- Heat resistance ~+150°C Withstand voltage ~AC 2500Vrms

■ Magnetic structure



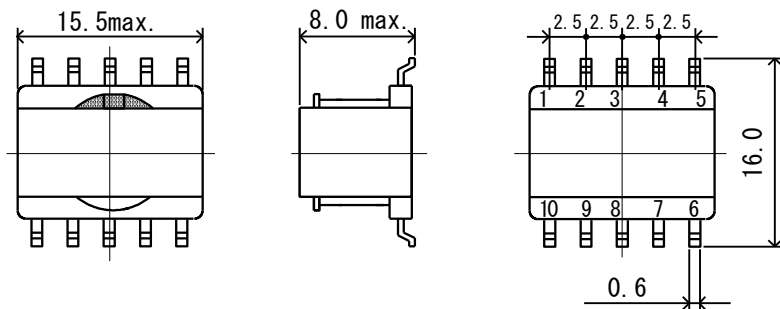
Operating Temperature Range : -40 °C~ +150 °C(include self-heating)

Weight : 2.5 g

■ Application

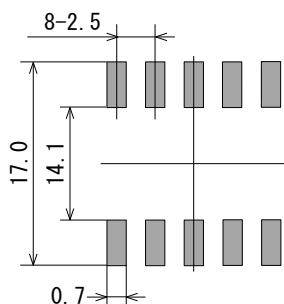
- In-vehicle
Power supply for Power Control Unit for HEV / EV
Isolated Power supply for Automotive, etc

■ Dimensions



(Unit : mm)

■ Recommended Land Pattern



SAGAMI ELEC CO., LTD.
<https://www.sagami-elec.co.jp>

10-30, Ichibashimo-cho, Tsurumi-ku, Yokohama, Kanagawa 230-0024, Japan
 Over Seas Sales Dept. TEL : +81 45 511 3141, E-mail : ossg@sagami-elec.co.jp
 Engineering Dept. TEL : +81 45 521 4543

⚠ The contents of this catalogue are subject to change without notice.

■ Selection Guide

| Type | Appearance | Maxim output power (reference) (W) | Withstand voltage (Primary -Secondary) (Vrms/1min) |
|----------|------------|------------------------------------------|-------------------------------------------------------------|
| VER1480B | EER14 SMD | 5.4 | 2500 |

| Type | Input voltage range (V) | Output voltage range (V) | Operating frequency (kHz) | Number of outputs (reference) |
|----------|-------------------------------|--------------------------------|---------------------------------|-------------------------------------|
| VER1480B | 0.7~35 | 150 max. | 1000 max. | 2 |

The above mentioned maximum out



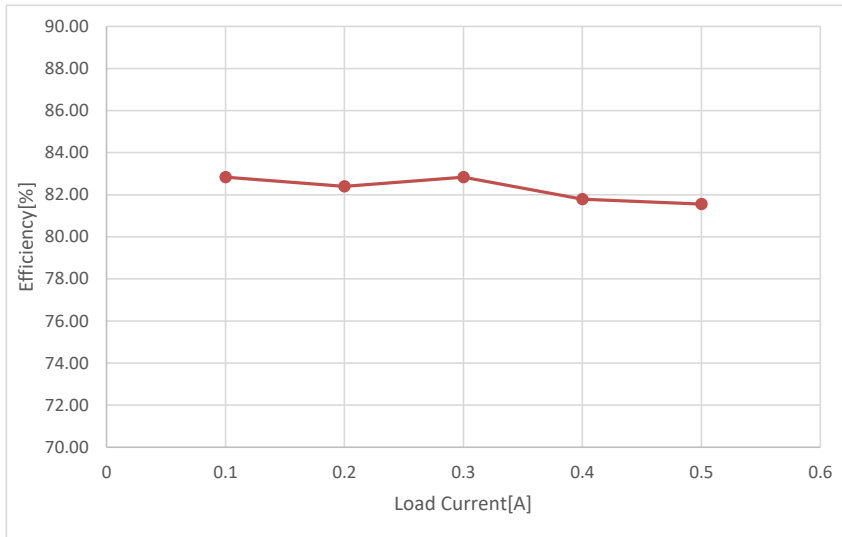
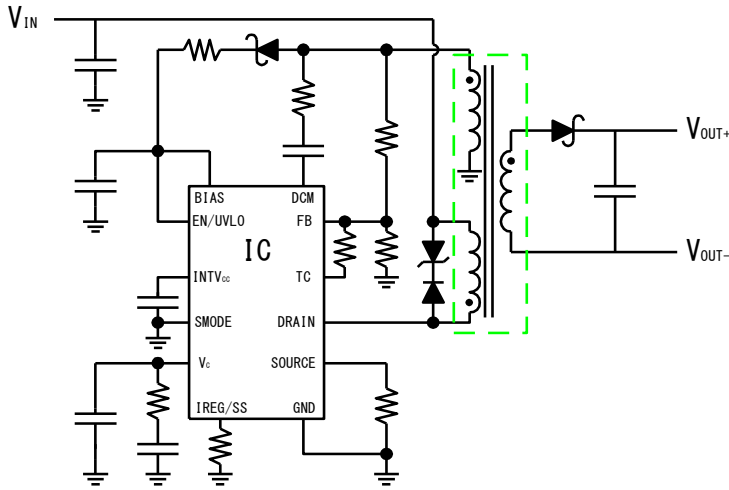
SAGAMI ELEC CO., LTD.
<https://www.sagami-elec.co.jp>

10-30, Ichibashimo-cho, Tsurumi-ku, Yokohama, Kanagawa 230-0024, Japan
 Over Seas Sales Dept. TEL : +81 45 511 3141, E-mail : ossg@sagami-elec.co.jp
 Engineering Dept. TEL : +81 45 521 4543

△ The contents of this catalogue are subject to change without notice.

■ Reference circuit

20V to 450Vin/12Vout Isolated Supply



SAGAMI ELEC CO., LTD.
<https://www.sagami-elec.co.jp>

10-30, Ichibashimo-cho, Tsurumi-ku, Yokohama, Kanagawa 230-0024, Japan
 Over Seas Sales Dept. TEL : +81 45 511 3141, E-mail : ossg@sagami-elec.co.jp
 Engineering Dept. TEL : +81 45 521 4543

⚠ The contents of this catalogue are subject to change without notice.