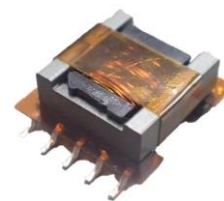


VEC1388B

New Products

RoHS

AEC-Q200



■ Features

- For various power supplies
- Optimal transformer design according to required specifications is possible
- Compatible with multiple outputs
- Heat resistance ~+150°C Withstand voltage ~AC 2500Vrms

■ Magnetic structure



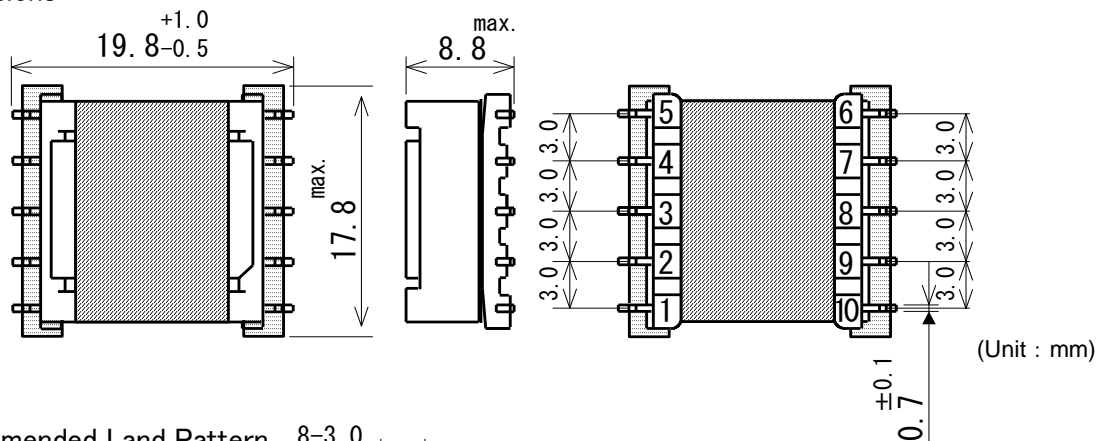
Operating Temperature Range : -40 °C~ +150 °C(include self-heating)

Weight : 3.6 g

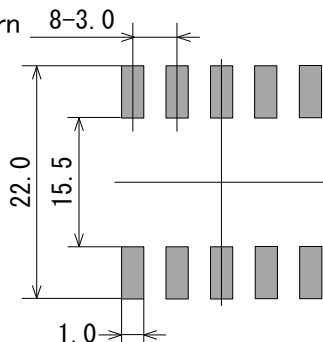
■ Application

- In-vehicle
Power supply for Power Control Unit for HEV / EV
Isolated Power supply for Automotive, etc

■ Dimensions



■ Recommended Land Pattern



SAGAMI ELEC CO., LTD.
<https://www.sagami-elec.co.jp>

10-30, Ichibashimo-cho, Tsurumi-ku, Yokohama, Kanagawa 230-0024, Japan
 Over Seas Sales Dept. TEL : +81 45 511 3141, E-mail : ossg@sagami-elec.co.jp
 Engineering Dept. TEL : +81 45 521 4543

⚠ The contents of this catalogue are subject to change without notice.

■ Selection Guide

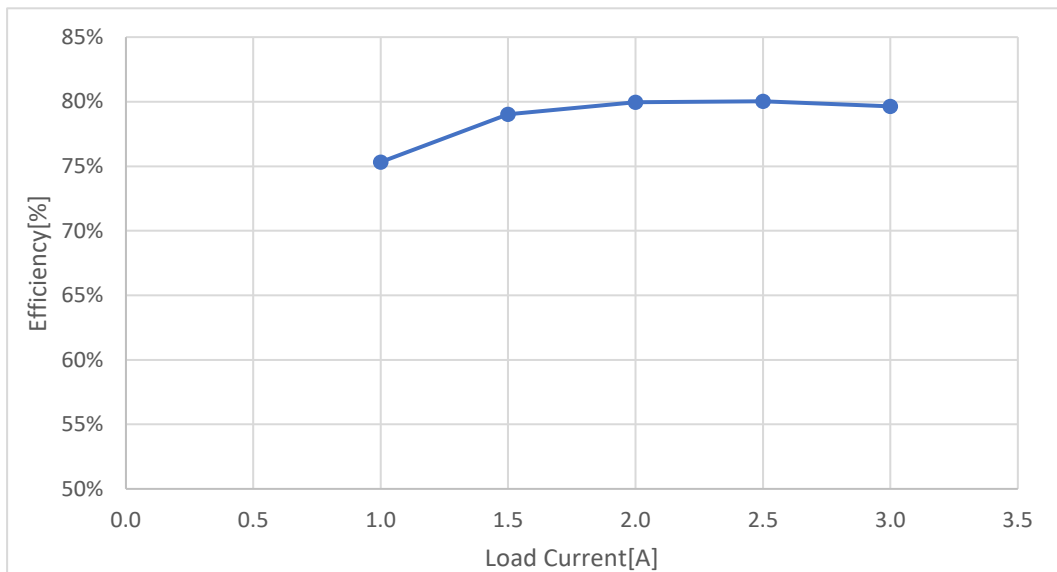
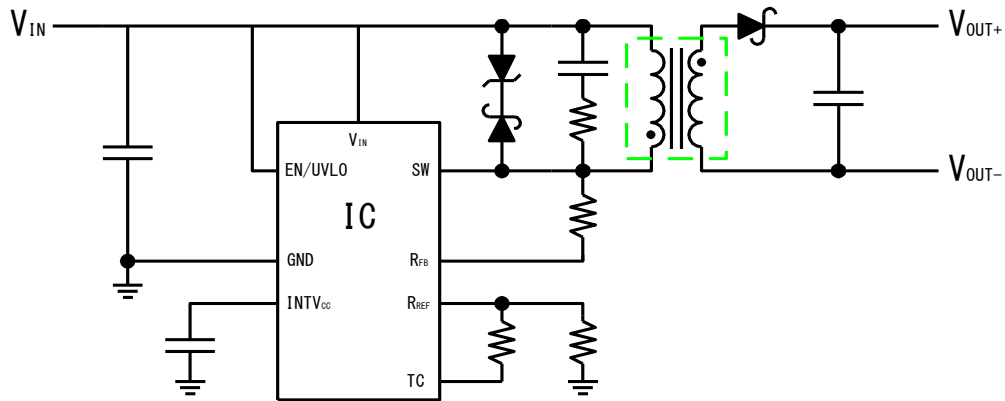
Type	Appearance	Maxim output power (reference) (W)	Withstand voltage (Primary -Secondary) (Vrms/1min)
VEC1388B	EPC13 SMD	4.8	2500

Type	Input voltage range (V)	Output voltage range (V)	Operating frequency (kHz)	Number of outputs (reference)
VEC1388B	0.7~35	130 max.	500 max.	2

The above mentioned maximum out

■ Reference circuit

4V to 80Vin/5Vout Isolated Supply



SAGAMI ELEC CO., LTD.
<https://www.sagami-elec.co.jp>

10-30, Ichibashimo-cho, Tsurumi-ku, Yokohama, Kanagawa 230-0024, Japan
 Over Seas Sales Dept. TEL : +81 45 511 3141, E-mail : ossg@sagami-elec.co.jp
 Engineering Dept. TEL : +81 45 521 4543

⚠ The contents of this catalogue are subject to change without notice.