

## TDG5629C

New Products

RoHS

AEC-Q200



### ■ Features

- Common mode inductor for large current
- High impedance at 100M to 3GHz

### ■ Magnetic structure



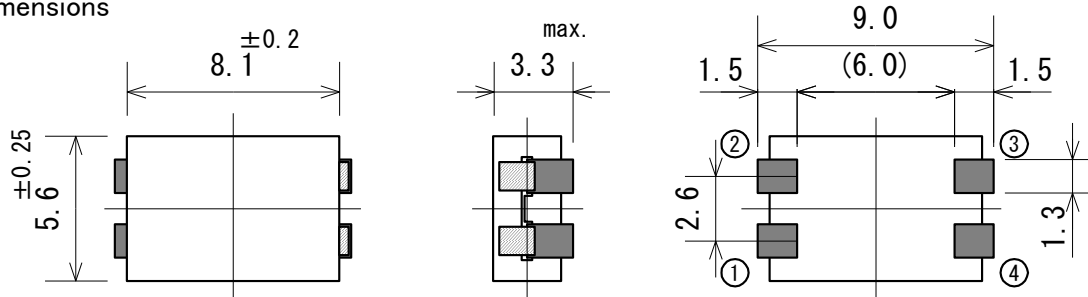
Operating Temperature Range : -40 °C~ +150 °C(include self-heating)

Weight : 0.6 g

### ■ Application

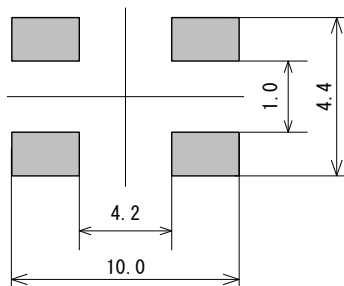
- power supplies
- Audio

### ■ Dimensions

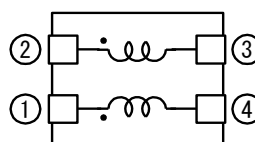


(Unit : mm)

### ■ Recommended Land Pattern



### ■ CONNECTION(BOTTOM VIEW)



SAGAMI ELEC CO., LTD.  
<https://www.sagami-elec.co.jp>

10-30, Ichibashimo-cho, Tsurumi-ku, Yokohama, Kanagawa 230-0024, Japan  
 Over Seas Sales Dept. TEL : +81 45 511 3141, E-mail : ossg@sagami-elec.co.jp  
 Engineering Dept. TEL : +81 45 521 4543

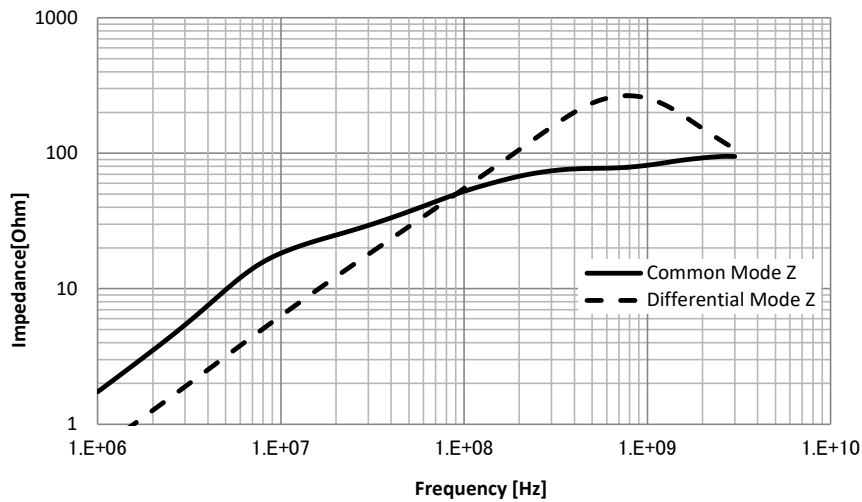
△ The contents of this catalogue are subject to change without notice.

## ■ Specifications

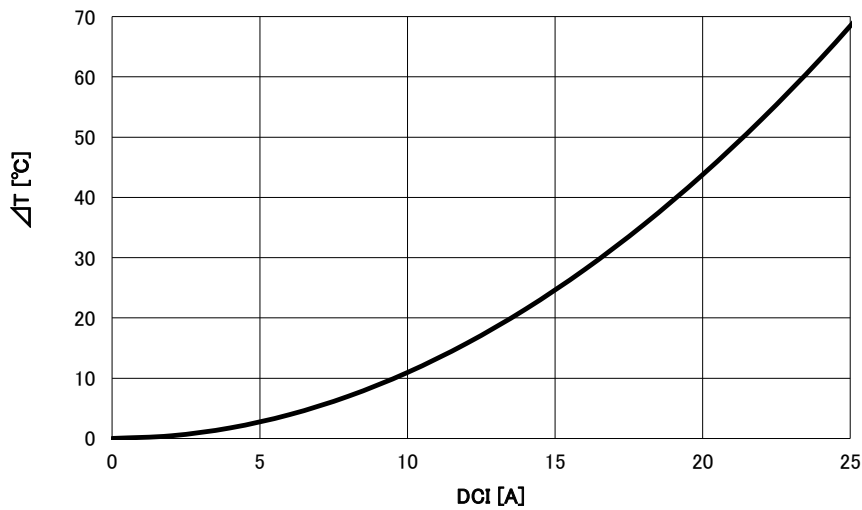
Impedance ( $\Omega$ )	DCR ( $m\Omega$ )	Temperature rise allowable current (A)
$52 \pm 30\%$	max.	Typical
100MHz at 0.1V	0.790	19.1

## ■ Characteristics

Characteristics of Z



Characteristics of Temperature rise



SAGAMI ELEC CO., LTD.  
<https://www.sagami-elec.co.jp>

10-30, Ichibashimo-cho, Tsurumi-ku, Yokohama, Kanagawa 230-0024, Japan  
 Over Seas Sales Dept. TEL : +81 45 511 3141, E-mail : ossg@sagami-elec.co.jp  
 Engineering Dept. TEL : +81 45 521 4543

△ The contents of this catalogue are subject to change without notice.