

SQR1257C

AEC-Q200

2in1



■ Features

- Small size and high efficiency are realized with the 2 in 1 structure, developed specifically for the SEPIC and ZETA converter.
- Magnetically shielded structure, high current.
- Four terminals structure for resisting to mechanical shock and vibration.
- AEC-Q200 compliant
- Operating temperature : -40°C~+125°C(The self-heating is included)

Magnetic structure :

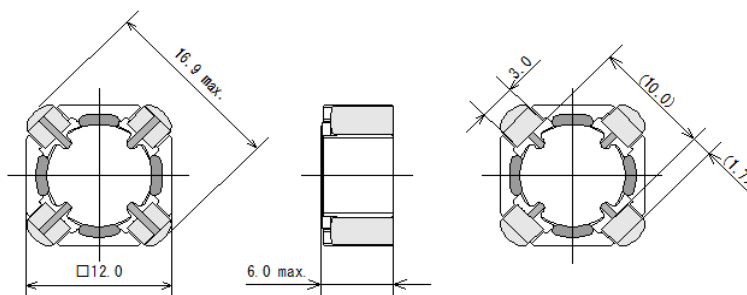


Weight : 2.9 g

■ Applications

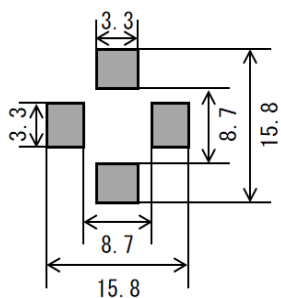
- Audio Visual/Camera
- Automotive/LED Headlights, Car Audio, Car Navigation, ECU
- Others/Power Supply, FA

■ Dimensions



(Unit : mm)

■ Recommended Land Pattern



(Unit : mm)



SAGAMI ELEC CO., LTD.
<https://www.sagami-elec.co.jp>

10-30, Ichibashimo-cho, Tsurumi-ku, Yokohama, Kanagawa 230-0024, Japan
 Over Seas Sales Dept. TEL : +81 45 511 3141, E-mail : ossg@sagami-elec.co.jp
 Engineering Dept. TEL : +81 45 521 4543

⚠ The contents of this catalogue are subject to change without notice.

■ Specifications

SAGAMI Part No.	Inductance (μ H)	DCR $\pm 30\%$ (Ω)		DC Saturation Allowable Current (A)	Temperature Rise Allowable Current (A)	
		④-③	②-①		One winding	Series connectio
SQR1257C-1R2N	1.2 $\pm 30\%$	0.00800	0.00900	15.4	5.40	3.80
SQR1257C-2R0N	2 $\pm 30\%$	0.0100	0.0110	12.1	4.90	3.50
SQR1257C-2R7N	2.7 $\pm 30\%$	0.0120	0.0140	10.0	4.40	3.20
SQR1257C-3R9N	3.9 $\pm 30\%$	0.0160	0.0190	8.55	3.90	2.75
SQR1257C-5R1N	5.1 $\pm 30\%$	0.0200	0.0230	7.50	3.35	2.50
SQR1257C-6R2N	6.2 $\pm 30\%$	0.0230	0.0270	6.60	3.10	2.40
SQR1257C-8R2N	8.2 $\pm 30\%$	0.0290	0.0350	5.80	2.75	2.00
SQR1257C-100M	10 $\pm 20\%$	0.0360	0.0420	5.35	2.55	1.80
SQR1257C-120M	12 $\pm 20\%$	0.0460	0.0540	4.95	2.20	1.60
SQR1257C-150M	15 $\pm 20\%$	0.0540	0.0640	4.15	2.00	1.45
SQR1257C-180M	18 $\pm 20\%$	0.0650	0.0770	3.75	1.80	1.35
SQR1257C-220M	22 $\pm 20\%$	0.0850	0.100	3.40	1.60	1.20
SQR1257C-270M	27 $\pm 20\%$	0.0900	0.110	3.25	1.50	1.10
SQR1257C-330M	33 $\pm 20\%$	0.120	0.140	2.80	1.40	1.05
SQR1257C-390M	39 $\pm 20\%$	0.140	0.160	2.60	1.25	0.910
SQR1257C-470M	47 $\pm 20\%$	0.160	0.190	2.35	1.15	0.830
SQR1257C-560M	56 $\pm 20\%$	0.190	0.230	2.20	1.05	0.770
SQR1257C-680M	68 $\pm 20\%$	0.240	0.280	1.90	0.920	0.690
SQR1257C-820M	82 $\pm 20\%$	0.270	0.330	1.80	0.850	0.640
SQR1257C-101M	100 $\pm 20\%$	0.340	0.410	1.55	0.750	0.550
SQR1257C-121M	120 $\pm 20\%$	0.420	0.510	1.45	0.680	0.510
SQR1257C-151M	150 $\pm 20\%$	0.520	0.630	1.35	0.610	0.460
SQR1257C-181M	180 $\pm 20\%$	0.650	0.790	1.25	0.540	0.420
SQR1257C-221M	220 $\pm 20\%$	0.840	1.01	1.05	0.470	0.360
SQR1257C-271M	270 $\pm 20\%$	1.00	1.20	1.00	0.430	0.330
SQR1257C-331M	330 $\pm 20\%$	1.10	1.35	0.900	0.400	0.300

Inductance Measuring Condition:100kHz,1V

DC saturation allowable current:The current value which inductance decrease within 30% from the initial value

Temperature rise allowable current:The rise in temperature of core surface is within 40°C



SAGAMI ELEC CO., LTD.
https://www.sagami-elec.co.jp

10-30, Ichibashimo-cho, Tsurumi-ku, Yokohama, Kanagawa 230-0024, Japan
Over Seas Sales Dept. TEL : +81 45 511 3141. E-mail : ossg@sagami-elec.co.jp
Engineering Dept. TEL : +81 45 521 4543

⚠ The contents of this catalogue are subject to change without notice.