

DBLQ8097HB

New Products

RoHS

AEC-Q200



■ Features

- Space reduction is realized by 2 in 1 construction
- The optimal design realizes high quality sound and low distortion
- Compact size using flat wire
- Product designed for 2MHz drive frequency
- HA:Low DCR type
- HB:High current type

■ Magnetic structure



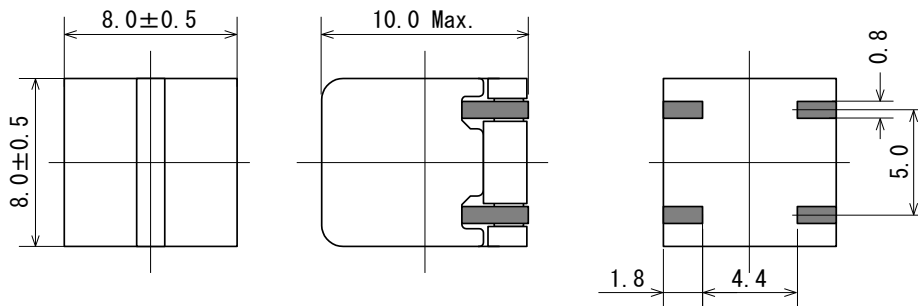
Operating Temperature Range : -40 °C~ +125 °C(include self-heating)

Weight : 2.1 g

■ Application

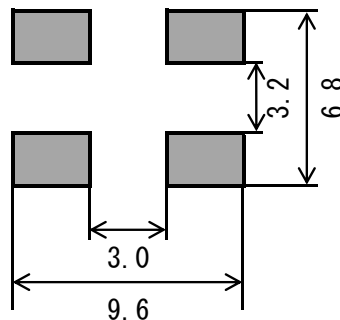
- AudioVisual
- TV and Monitor, Mini component, AV amplifier, Amplifier for professional
- Automotive
Car Audio, Car Navigation
- Home Electronics
Games
- Others
Power Supply

■ Dimensions



(Unit : mm)

■ Recommended Land Pattern



SAGAMI ELEC CO., LTD.
<https://www.sagami-elec.co.jp>

10-30, Ichibashimo-cho, Tsurumi-ku, Yokohama, Kanagawa 230-0024, Japan
 Over Seas Sales Dept. TEL : +81 45 511 3141, E-mail : ossg@sagami-elec.co.jp
 Engineering Dept. TEL : +81 45 521 4543

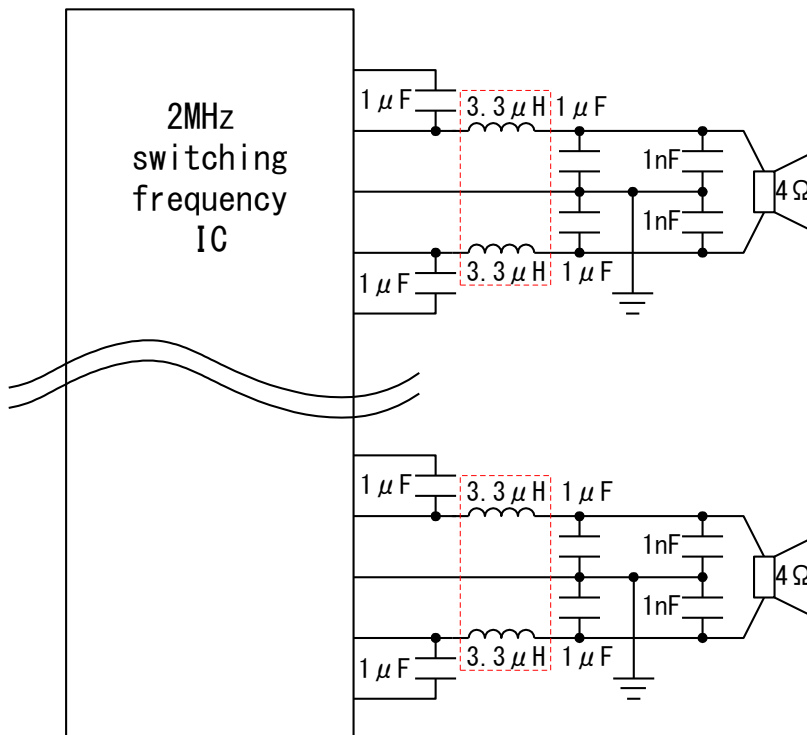
⚠ The contents of this catalogue are subject to change without notice.

■ Specifications

SAGAMI Part No.	Inductance (μH)	DCR Resistance		DC saturation allowable current (A)	Teperature rise allowable current (A)
		(m Ω)			
		Typical	max.		
DBLQ8097HB-3R3M	3.3 \pm 20%	19.2	25.0	9.80	3.30
-	-	-	-	-	-
-	-	-	-	-	-
-	-	-	-	-	-
-	-	-	-	-	-

- Inductance Measuring Condition : 100kHz,1V
- Rated current : DC saturation allowable current or Temperature rise allowable current,whichever is smaller.
 1. DC saturation allowable current : value of inductance decrease 25%.
 2. Temperature rise allowable current : A rise in temperature of core surface is 40°C.

■ Circuit example



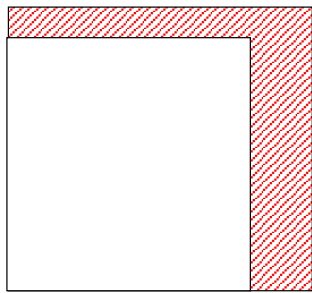
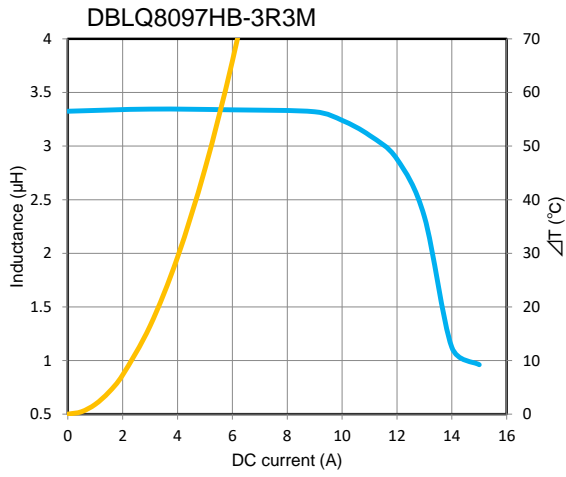
SAGAMI ELEC CO., LTD.
<https://www.sagami-elec.co.jp>

10-30, Ichibashimo-cho, Tsurumi-ku, Yokohama, Kanagawa 230-0024, Japan
 Over Seas Sales Dept. TEL : +81 45 511 3141, E-mail : ossg@sagami-elec.co.jp
 Engineering Dept. TEL : +81 45 521 4543

⚠ The contents of this catalogue are subject to change without notice.

DC bias characteristics vs Temperature Rise Graph

■ L(25°C) ■ ΔT



 DBL9097HB : 90mm²
↓ -30%
 DBLQ8097H□ : 64mm²

