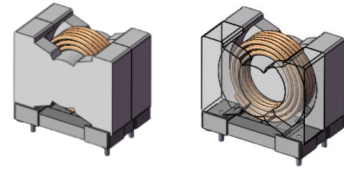


# CVE2622M

New Products

RoHS

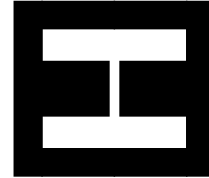
AEC-Q200



■ Features

- Power inductor with greatly improved current characteristics
- Closed magnetic circuit structure with low leakage flux

■ Magnetic structure



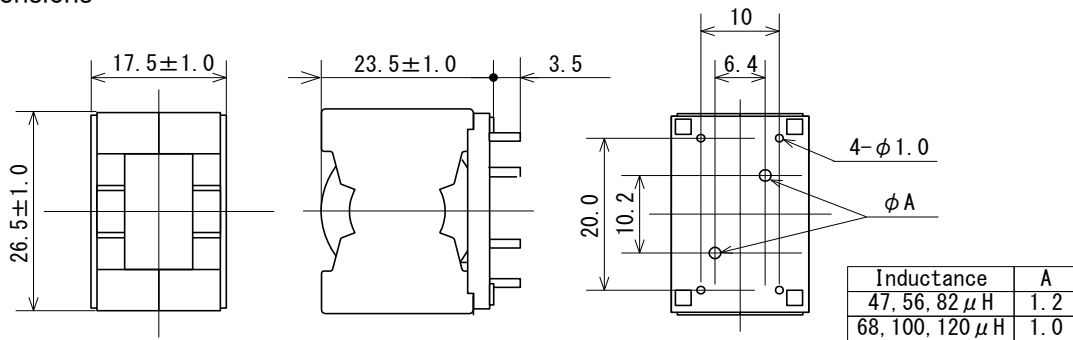
Operating Temperature Range : -40 °C~ +150 °C(include self-heating)

Weight : 33.0 g

■ Application

- Electronic devices for Vehicle
- For DC/DC converter
- For Noise Filter

■ Dimensions



(Unit : mm)



SAGAMI ELEC CO., LTD.  
<https://www.sagami-elec.co.jp>

10-30, Ichibashimo-cho, Tsurumi-ku, Yokohama, Kanagawa 230-0024, Japan  
 Over Seas Sales Dept. TEL : +81 45 511 3141, E-mail : ossg@sagami-elec.co.jp  
 Engineering Dept. TEL : +81 45 521 4543

⚠ The contents of this catalogue are subject to change without notice.

## ■ Specifications

SAGAMI Part No.	Inductance ( $\mu$ H)	DCR Resistance (m $\Omega$ ) max.	Rated current	
			DC saturation allowable current (A)	Teperature rise allowable current (A)
CVE2622M-470M	47.0 $\pm$ 20%	14.3	12.8	12.0
CVE2622M-560M	56.0 $\pm$ 20%	14.3	11.2	12.0
CVE2622M-680M	68.0 $\pm$ 20%	24.1	9.20	9.00
CVE2622M-820M	82 $\pm$ 20%	14.3	9.20	12.0
CVE2622M-101M	100 $\pm$ 20%	24.1	7.50	9.00
CVE2622M-121M	120 $\pm$ 20%	24.1	6.40	9.00
-	-	-	-	-
-	-	-	-	-
-	-	-	-	-
-	-	-	-	-

- Inductance Measuring Condition : 100kHz,1V
- Rated current : DC saturation allowable current or Temperature rise allowable current,whichever is smaller.
  - 1.DC saturation allowable current : value of inductance decrease 10%.
  - 2.Temperature rise allowable current : A rise in temperature of core surface is 40°C.



SAGAMI ELEC CO., LTD.  
<https://www.sagami-elec.co.jp>

10-30, Ichibashimo-cho, Tsurumi-ku, Yokohama, Kanagawa 230-0024, Japan  
 Over Seas Sales Dept. TEL : +81 45 511 3141, E-mail : ossg@sagami-elec.co.jp  
 Engineering Dept. TEL : +81 45 521 4543

⚠ The contents of this catalogue are subject to change without notice.

# DC bias characteristics vs Temperature Rise Graph

 L(25°C)

  $\Delta T$

