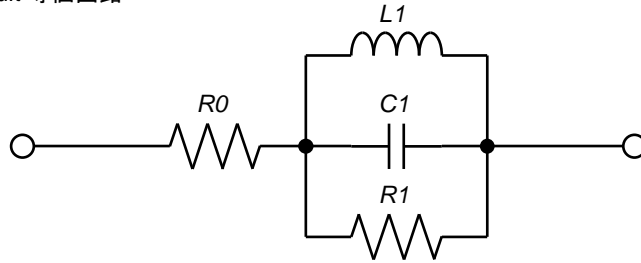


## ■ CER7027C Power Inductors

Equivalent Circuit 等価回路



| Part Number<br>品番 | Equivalent Circuit Parameters<br>等価回路パラメータ |               |               |               |
|-------------------|--|---------------|---------------|---------------|
|                   | $R_0$<br>(mΩ)                              | $L_1$<br>(μH) | $C_1$<br>(pF) | $R_1$<br>(kΩ) |
| CER7027C-1R1N     | 8  | 1.1           | 1.1           | 2.6           |
| CER7027C-1R5N     | 11   | 1.5           | 1.36          | 3.3           |
| CER7027C-2R2N     | 14   | 2.2           | 1.38          | 4.3           |
| CER7027C-2R7N     | 17   | 2.7           | 1.25          | 5.5           |
| CER7027C-3R3N     | 22   | 3.3           | 1.52          | 6.2           |
| CER7027C-3R9N     | 27   | 3.9           | 1.54          | 7.4           |
| CER7027C-4R7N     | 30   | 4.7           | 1.8           | 8.5           |
| CER7027C-5R6N     | 37   | 5.6           | 1.81          | 9.4           |
| CER7027C-6R2N     | 40   | 6.2           | 1.84          | 10.7          |
| CER7027C-7R5N     | 45   | 7.5           | 1.89          | 12.5          |
| CER7027C-9R1N     | 49   | 9.1           | 1.53          | 13.7          |
| CER7027C-100M     | 60   | 10            | 1.63          | 14.4          |
| CER7027C-120M     | 74   | 12            | 2.12          | 17.4          |
| CER7027C-150M     | 90   | 15            | 2.2           | 19.2          |
| CER7027C-180M     | 110  | 18            | 2.02          | 22.5          |
| CER7027C-220M     | 130  | 22            | 2.02          | 25.7          |
| CER7027C-270M     | 160  | 27            | 2.14          | 30.4          |
| CER7027C-330M     | 200  | 33            | 2.27          | 37.7          |
| CER7027C-390M     | 230  | 39            | 1.96          | 41.4          |
| CER7027C-470M     | 270  | 47            | 2.11          | 46.4          |
| CER7027C-560M     | 340  | 56            | 2.34          | 56.8          |
| CER7027C-680M     | 390  | 68            | 2.01          | 63.6          |
| CER7027C-820M     | 470  | 82            | 2.25          | 71.8          |
| CER7027C-101M     | 590  | 100           | 1.96          | 88.8          |
| CER7027C-121M     | 730  | 120           | 2.66          | 101.9         |
| CER7027C-151M     | 850  | 150           | 2.34          | 128.8         |
| CER7027C-181M     | 1080                                       | 180           | 2.79          | 140.9         |
| CER7027C-221M     | 1230                                       | 220           | 2.22          | 174           |
| CER7027C-271M     | 1540                                       | 270           | 2.44          | 197.4         |
| CER7027C-331M     | 1780                                       | 330           | 2.73          | 225.5         |
| CER7027C-391M     | 2300                                       | 390           | 2.5           | 258.6         |
| CER7027C-471M     | 2600                                       | 470           | 2.24          | 266.9         |
| CER7027C-561M     | 3350                                       | 560           | 2.45          | 340.9         |
| CER7027C-681M     | 3820                                       | 680           | 2.45          | 417.6         |
| CER7027C-821M     | 5060                                       | 820           | 2.26          | 356.5         |
| CER7027C-102M     | 5790                                       | 1000          | 2.33          | 543.6         |

Notes: 1. This Parameters is reference characteristics of products, does not guarantee the characteristics of products  
 2. It is your responsibility to test products before adopting them without placing only reliance on the Data.

記事: 1. 本パラメーターは製品の特性に対する参考データであり、製品の特性を保証するものではありません。  
 2. 製品の採用に際して、本データのみには依存することなく、必ず製品の実装を行い試験を行ってください。