

SMD Power Inductors (unshielded type)

CJD6057

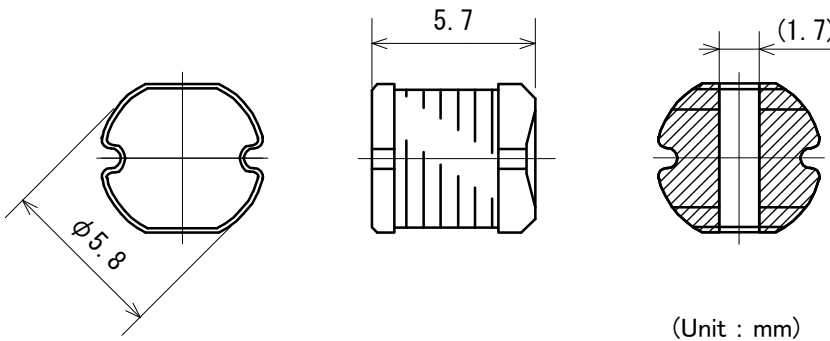
■ Features

- Low profile – 5.7mm height and 5.8mm square
- Magnetically unshielded structure, high current.
- High reliability in deflection and shock resistance with metalized electrode
- Operating temperature range : -40 to +105°C
(Including self-temperature rise)
- RoHS compliance



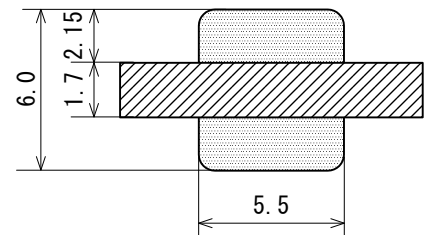
Weight:0.52g

■ Dimensions



(Unit : mm)

■ Recommended Land Pattern

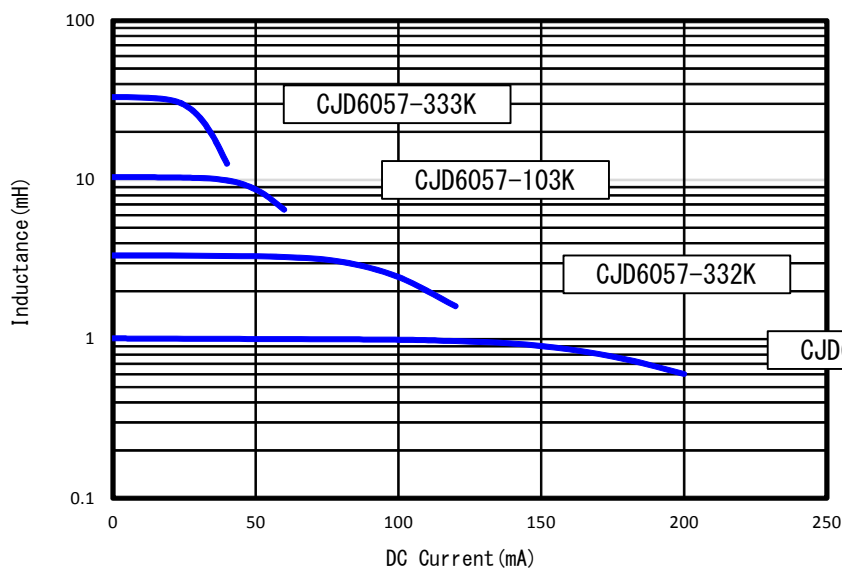


* Please coat with screen between the terminale.

( aria)

(Unit : mm)

■ Saturation current characteristic



SAGAMI ELEC CO., LTD.
<http://www.sagami-elec.co.jp>

10-30, Ichibashimo-cho, Tsurumi-ku, Yokohama, Kanagawa 230-0024, Japan
 Over Seas Sales Dept. TEL : +81 45 511 3141, E-mail : ossg@sagami-elec.co.jp
 Engineering Dept. TEL : +81 45 521 4543, E-mail : tech@sagami-elec.co.jp

SMD Power Inductors (unshielded type)

■ Specifications

Part No.	Inductance (mH)	DC Resistance (Ω) max.	DC Saturation Allowable Current (mA)	Temperature Rise Allowable Current (mA)
CJD6057-102K	1.0 \pm 10%	3.7	128	253
CJD6057-122K	1.2 \pm 10%	4.1	119	239
CJD6057-152K	1.5 \pm 10%	5.4	108	209
CJD6057-182K	1.8 \pm 10%	7.0	101	180
CJD6057-222K	2.2 \pm 10%	8.0	93	167
CJD6057-272K	2.7 \pm 10%	9.3	81	150
CJD6057-332K	3.3 \pm 10%	12.2	74	135
CJD6057-392K	3.9 \pm 10%	15.7	66	117
CJD6057-472K	4.7 \pm 10%	17.9	61	108
CJD6057-562K	5.6 \pm 10%	20.1	55	104
CJD6057-682K	6.8 \pm 10%	27.0	48	89
CJD6057-822K	8.2 \pm 10%	30.6	47	88
CJD6057-103K	10 \pm 10%	43.0	42	69
CJD6057-123K	12 \pm 10%	48.8	38	65
CJD6057-153K	15 \pm 10%	56.7	33	62
CJD6057-183K	18 \pm 10%	64.5	31	55
CJD6057-223K	22 \pm 10%	96.5	28	44
CJD6057-273K	27 \pm 10%	111.8	25	41
CJD6057-333K	33 \pm 10%	129.1	22	37

* Inductance Measuring Condition : 1kHz, 1V

* Rated current : DC saturation allowable current or Temperature rise allowable current, whichever is smaller.

1. DC Saturation Allowable Current : value of inductance decrease within 10% .

2. Temperature Rise Allowable Current : A rise in temperature of core surface is within 40°C.



SAGAMI ELEC CO., LTD.
<http://www.sagami-elec.co.jp>

10-30, Ichibashimo-cho, Tsurumi-ku, Yokohama, Kanagawa 230-0024, Japan
 Over Seas Sales Dept. TEL : +81 45 511 3141, E-mail : ossg@sagami-elec.co.jp
 Engineering Dept. TEL : +81 45 521 4543, E-mail : tech@sagami-elec.co.jp