

SMD Power Inductor

CBE1597H

■ Features

- Greatly improved current characteristics
- Low DCR with flat wire
- Shielded, **high current**
- High reliability in vibration and shock resistance with 3 terminals
- Operating Temperature Range: -40~+125°C (include self-heating)
- **AEC-Q200 compliance**
- RoHS compliance

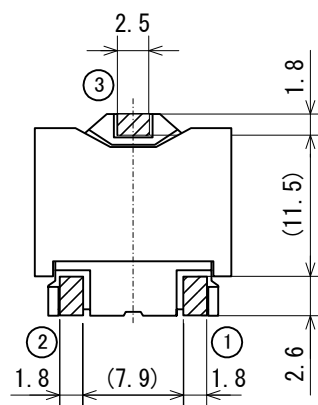
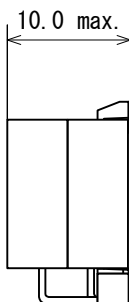
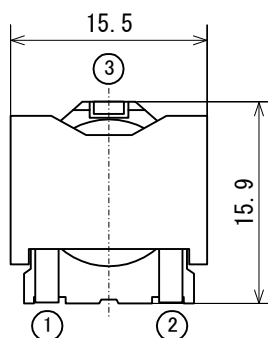


Weight: 7.0g

■ Application

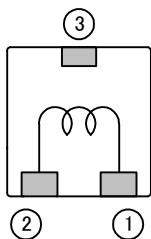
- Applications: For DC-DC Converter or noise filter for Engine ECU, ABS, HID/LED headlamp, Note PC, Amusement

■ Dimensions



(Unit : mm)

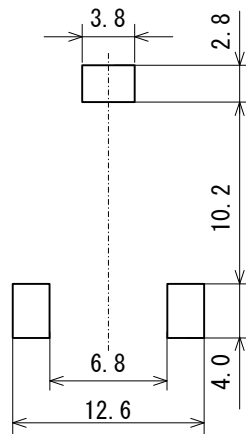
■ Connection (Bottom view)



■ Magnetic structure



■ Recommended Land Pattern



(Unit : mm)

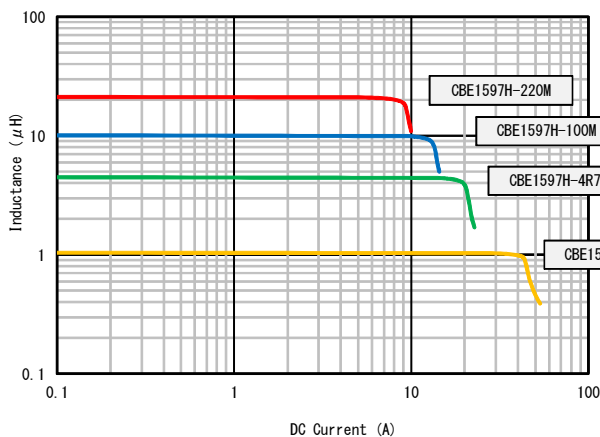


SAGAMI ELEC CO., LTD.
<http://www.sagami-elec.co.jp>

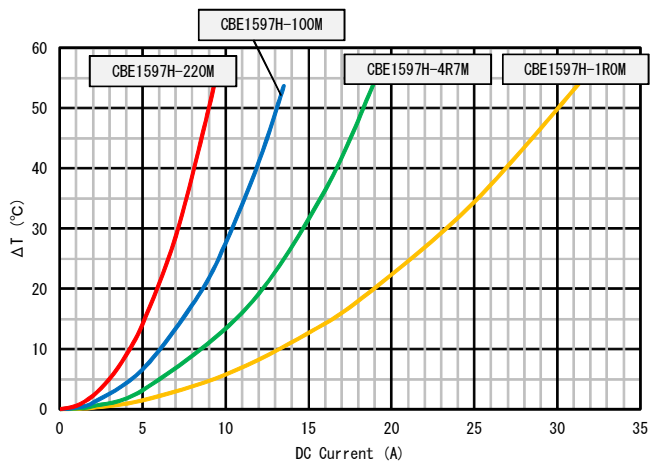
10-30, Ichibashimo-cho, Tsurumi-ku, Yokohama, Kanagawa 230-0024, Japan
 Over Seas Sales Dept. TEL : +81 45 511 3141, E-mail : ossg@sagami-elec.co.jp
 Engineering Dept. TEL : +81 45 521 4543, E-mail : tech@sagami-elec.co.jp

SMD Power Inductor

Characteristics of DC Saturation Current



Characteristics of Temperature rise



Specifications

| Part No. | Inductance (μH) | DCR Resistance (mΩ) ±20% | DC saturation allowable current (A) | Temperature rise allowable current (A) |
|---------------|-----------------|--------------------------|-------------------------------------|--|
| CBE1597H-1R0M | 1.0±20% | 1.5 | 39.2 | 21.1 |
| CBE1597H-1R2M | 1.2±20% | 1.5 | 33.9 | 21.1 |
| CBE1597H-1R8M | 1.8±20% | 1.9 | 30.1 | 18.5 |
| CBE1597H-2R0M | 2.0±20% | 1.9 | 25.8 | 18.5 |
| CBE1597H-2R7M | 2.7±20% | 2.4 | 24.4 | 17.2 |
| CBE1597H-3R3M | 3.3±20% | 2.4 | 20.8 | 17.2 |
| CBE1597H-3R9M | 3.9±20% | 4.0 | 20.1 | 13.4 |
| CBE1597H-4R7M | 4.7±20% | 4.0 | 17.1 | 13.4 |
| CBE1597H-5R6M | 5.6±20% | 4.7 | 17.1 | 12.3 |
| CBE1597H-6R2M | 6.2±20% | 4.7 | 14.5 | 12.3 |
| CBE1597H-8R2M | 8.2±20% | 5.3 | 12.7 | 11.3 |
| CBE1597H-100M | 10±20% | 7.5 | 11.4 | 9.5 |
| CBE1597H-120M | 12±20% | 8.2 | 10.3 | 9.0 |
| CBE1597H-150M | 15±20% | 11.9 | 9.3 | 7.6 |
| CBE1597H-180M | 18±20% | 13.0 | 8.5 | 7.2 |
| CBE1597H-220M | 22±20% | 14.3 | 8.0 | 6.6 |

* Inductance Measuring Condition : 100kHz, 1V

* Rated current : DC saturation allowable current or Temperature rise allowable current, whichever is smaller.

1. DC Saturation Allowable Current : value of inductance decrease within 30% .

2. Temperature Rise Allowable Current : A rise in temperature of core surface is within 40°C.



SAGAMI ELEC CO., LTD.
<http://www.sagami-elec.co.jp>

10-30, Ichibashimo-cho, Tsurumi-ku, Yokohama, Kanagawa 230-0024, Japan
 Over Seas Sales Dept. TEL : +81 45 511 3141, E-mail : ossg@sagami-elec.co.jp
 Engineering Dept. TEL : +81 45 521 4543, E-mail : tech@sagami-elec.co.jp