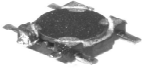
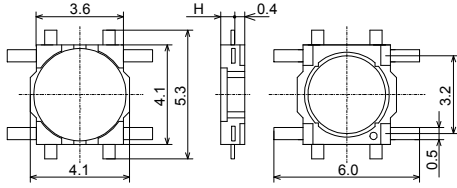


■ 7004D-1S / 1L

Frequency Range: ~1MHz
 Inductance Range: 2.2 ~ 270μH
 Temperature Coefficient: ±10% max.



I
Fixed



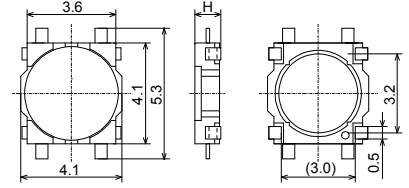
H=0.8max : 7004D-1S
 H=1.0max : 7004D-1L

■ 7004D-1M / 1N / 1H

Frequency Range: ~1MHz
 Inductance Range: 2.2 ~ 470μH
 Temperature Coefficient: ±10% max.



I
Fixed



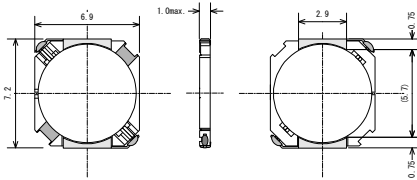
H=1.2max : 7004D-1M
 H=1.4max : 7004D-1N
 H=1.8max : 7004D-1H

■ CBD6908

Frequency Range: ~1MHz
 Inductance Range: 1.2 ~ 47μH
 Temperature Coefficient: ±10% max.



I
Fixed

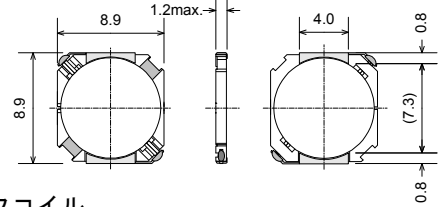


■ CBD8810

Frequency Range: ~1MHz
 Inductance Range: 3.3 ~ 22μH
 Temperature Coefficient: ±10% max.



I
Fixed

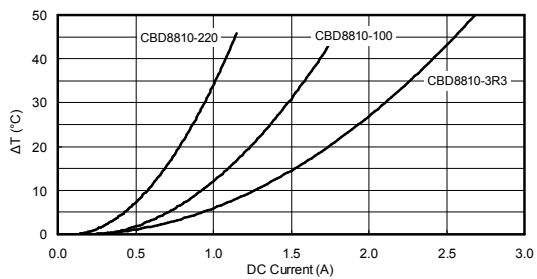
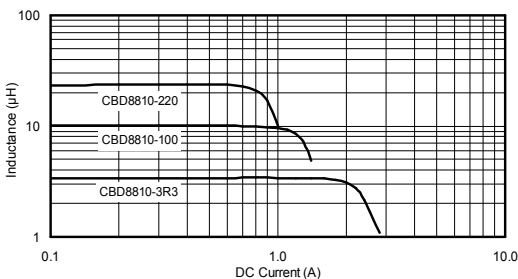
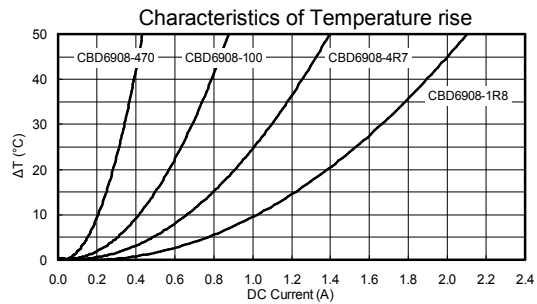
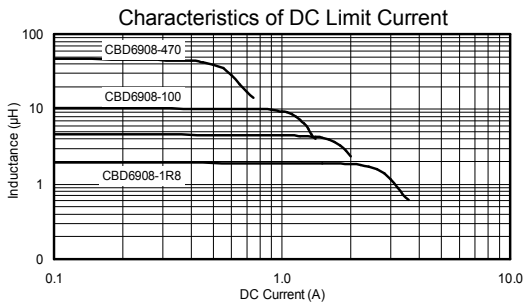
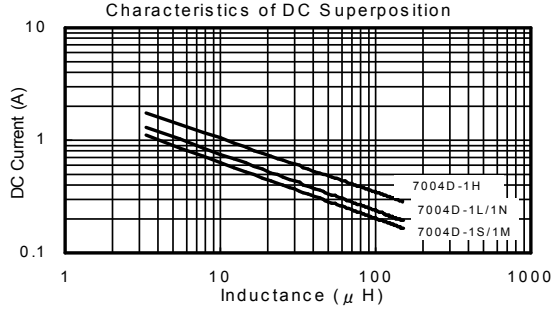
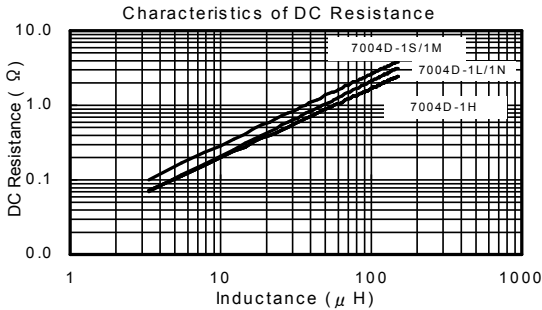


Features

- Extremely thin type choke coil.
- Structure of 4 terminals; for transformer. (except for CBD type)
- Buried into PC Board makes it thin configuration.

特長

- 超薄型チョークコイル
- 4端子構造でトランスにも使用可能 (CBDタイプを除く)
- プリント基板に落とし込むことで低背化が可能



Notes: 1. Graphs are based on typical values of each type, not spec. values.
 2. DC current value is being measured at 10% decrease of inductance.

記事: 1. 特性グラフは各タイプの代表値を基に作成しています。規格値ではありません。
 2. 電流値はインダクタンスが10%低下する時の値です。

Coil Selection Guide

Inductance インダクタンス ±20% (M)		DC Resistance 直流抵抗 (Ω)					DC saturation allowable current 直流重畳許容電流 (mA)					Temperature rise allowable current 温度上昇許容電流 (mA)			
Code	(μH)	±30%			max. - Typical		(mA)								
		7004D-1S/1M	7004D-1L/1N	7004D-1H	CBD6908	CBD8810	7004D-1S/1M	7004D-1L/1N	7004D-1H	CBD6908	CBD8810	CBD6908	CBD8810		
1R2	1.2				0.080	0.060				2500		1650			
1R8	1.8				0.110	0.080				2100		1330			
2R2	2.2	0.087	0.077	0.058			1000	1400	1700						
2R7	2.7	0.097	0.092	0.063	0.160	0.120	900	1200	1500	1700		1150			
3R3	3.3	0.120	0.100	0.071			800	1100	1400		1900		1760		
3R6	3.6				0.100	0.160				1400		1000			
3R9	3.9	0.130	0.110	0.085			770	1050	1300						
4R7	4.7	0.150	0.140	0.100	0.240	0.180	750	1000	1200	1200		900			
5R1	5.1										1490		1610		
5R6	5.6	0.170	0.160	0.120			650	950	1050						
6R2	6.2				0.320	0.250				1150	1410	750	1460		
6R8	6.8	0.200	0.200	0.150			620	860	980						
7R5	7.5				0.350	0.260				1100		700			
8R2	8.2	0.240	0.220	0.170			540	820	900		1180		1290		
9R1	9.1				0.470	0.360				1000		650			
100	10	0.320	0.270	0.210	0.510	0.390	0.171	0.131	500	740	830	950	1060	600	1230
120	12	0.380	0.310	0.250	0.580	0.440	0.192	0.147	450	690	770	800	980	550	1090
150	15	0.470	0.360	0.300	0.730	0.560	0.250	0.192	400	620	650	750	910	500	950
180	18	0.560	0.490	0.360	0.840	0.640	0.272	0.209	350	530	620	700	830	450	870
220	22	0.690	0.580	0.430	1.10	0.840	0.369	0.283	300	460	570	630	750	390	780
270	27	0.810	0.750	0.500	1.30	1.00			270	430	520	550		370	
330	33	1.05	0.850	0.570	1.45	1.12			250	390	470	500		340	
390	39	1.20	1.05	0.770	1.90	1.47			220	370	450	450		320	
470	47	1.35	1.15	0.840	2.20	1.69			200	330	420	400		280	
560	56	1.50	1.60	1.10					190	300	370				
680	68	2.00	1.80	1.30					180	260	350				
820	82	2.30	2.00	1.60					170	240	300				
101	100	3.30	2.30	1.90					160	220	280				
121	120	3.70	3.10	2.40					150	200	240				
151	150	4.60	3.60	2.80					130	180	220				
181	180		4.20	3.90						160	200				
221	220		6.00	5.70						140	180				
271	270		7.00	6.40						130	160				
331	330			7.30							140				
391	390			8.30							130				
471	470			9.50							120				

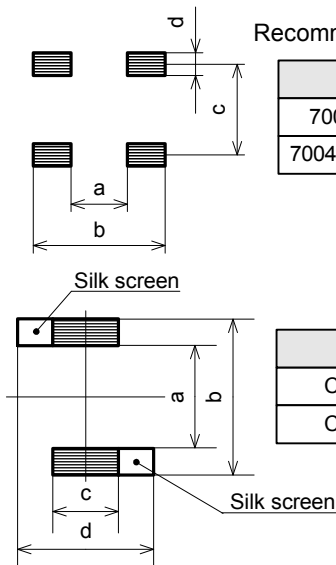
- Notes: 1. Measurement Frequency for Inductance: See table below for Measurement Frequency.
 2. DC saturation allowable current: Value of inductance decrease within 10%. (within 30% for CBD6908, CBD8810)
 3. Temperature rise allowable current: A rise in temperature of core surface is within 40°C.

- 記事: 1. インダクタンス測定周波数: 下記の表を参照。
 2. 直流重畳許容電流: インダクタンスの減少が10%以内の直流電流値。(CBD6908、CBD8810は30%以内の値)
 3. 温度上昇許容電流: コアの表面温度上昇が40°C以下の直流電流値。

Measurement Frequency 測定周波数

7004D-1S/1M	7004D-1L/1N	7004D-1H	CBD6908	CBD8810
100kHz (< 10 μH), 1kHz (≥ 10 μH)			100kHz	

Recommended Land Pattern 推奨ランドパターン



Type	a	b	c	d
7004D-1S/1L	4.1	7.0	3.2	0.9
7004D-1M/1N/1H	2.4	4.6	3.2	0.9

Type	a	b	c	d
CBD6908	4.8	8.2	3.3	7.3
CBD8810	6.5	9.9	4.3	9.3

Parts Code 品番コード例

7004D-1S	100	M
Type タイプ	Inductance Code インダクタンスコード	Tolerance 許容差